



Gas Meter G4 0.5 Bar

Product Code: J094

Connections: Moulded connections ensure optimum resistance to corrosion. Material protected against corrosion (500h salt spray test). Available in different versions.

Backflow Flap: (Option for 210-250 mm versions). Available with and without backflow flap. Protects against the backflow of gas.

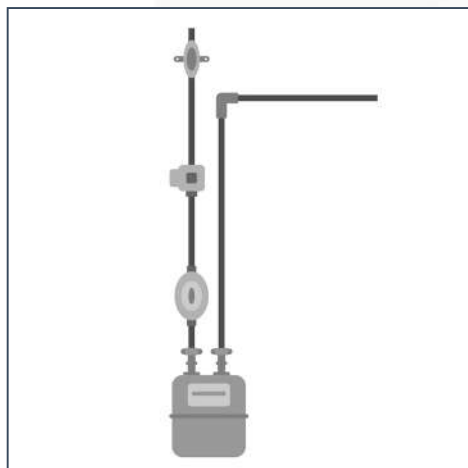
Body: Made from aluminium-coated sheet steel, i.e. protected against corrosion. Additional coating with solvent-free paint.

Applications

Backrun Stop: Prevents the meter from running backwards.

Crimped Body: Crimped version for PN 0.1 – PN 0.2 – PN 0.5. No water residues due to integrated crimp. Safe, DVGW-approved sealing material.

Plastic Measuring Unit: Two-litre measuring unit. Good recyclability due to the use of the same classes of plastic (where possible) Resistance to chemicals and gas.



Technical Specifications



Gas Type	Natural Gas, air, propane, butane, nitrogen and all non-corrosive gases	
Cyclic Volume	2 dm ³	
Temperature range	Ambient: -25°C to +55°C Gas: -25°C to +40°C (-10°C to +40°C for G1.6) Storage: -40°C to +70°C	
Maximum Operating Pressure	0.5 bar (0.1 bar HTL) for steel version 1.5 bar for aluminium version (HP)	
Measuring Range	G1.6	Qmin 0.016 m ³ /h Qmax 2.5 m ³ /h
	G2.5	Qmin 0.025 m ³ /h Qmax 4 m ³ /h
	G4	Qmin 0.04 m ³ /h Qmax 6 m ³ /h
	G6	Qmin 0.06 m ³ /h Qmax 10 m ³ /h
Pulse Generator	Standard 0.1 m ³ / pulse Optional 0.01 m ³ / pulse	
Pulse Transmitter	Retrofittable LF-system, 24 Vdc max – 50 mA max. standard 0.1 m ³ /pulse, Different versions: with 1m cable, binder plug or connecting block	
Casing Material	Steel or aluminium	
Connections Threads	ISO 228-1 standards: G 1" A; G 1" 1/4 A; G 1" 3/4" A; GM 1"; GM 3/4"; Others on request	
Colour	RAL 7035 for steel RAL 9010 for aluminium	

Size:

Packaging: